



Creating A Smarter World

Website: www.jwipc.com

Tel: +86-0755-23981883

Email: info@jwipc.com

JWIPC Technology Co.,Ltd

Address: 13F, Tower B, Haisong Building,Tairan 9 Road,
Futian Dist., Shenzhen, Guangdong, China.



Digital Signage Product Catalog

Experience the Pinnacle of Audiovisual excellence

ABOUT JWIPC

Empowering customers, creating a smarter future.

JWIPC is a national high-tech enterprise and a national “Specialized, Refined, Unique, and New” (SRUN) company. With a focus on intelligent hardware solutions, we are dedicated to advancing the AIoT ecosystem and enhancing digitalization. The company has core strengths in product development, flexible manufacturing, and digitalized information management.

1994

Established from

1600+

No.of Employees

20+

Market Sectors

SZ
001339

Stock Symbol

JWIPC Services

→ (DMS) Design & Manufacturing Service Provider ←

ODM Service

Standard & Customized

Help customers get to market quickly
Consumer products for special Customers

OBM Service

JWIPC Brand

Industrial Products include BOX PC, Panel PC etc.
Consumer Products include Green PC, MINI PC etc.

Customization



ID Design

Appearance Design
Utilization of Materials
Ergonomic



PCB Layout Design

Circuit Design
Layout
Component Selection
Power supply Design



Test Validation

Functionality & Compatibility Testing
Reliability & Environmental Class Tests
EMC Test
MTBF Test



ME Design

Whole Machine Design
Thermal Design
Power Design
Vibration Resistant Design



System Integration

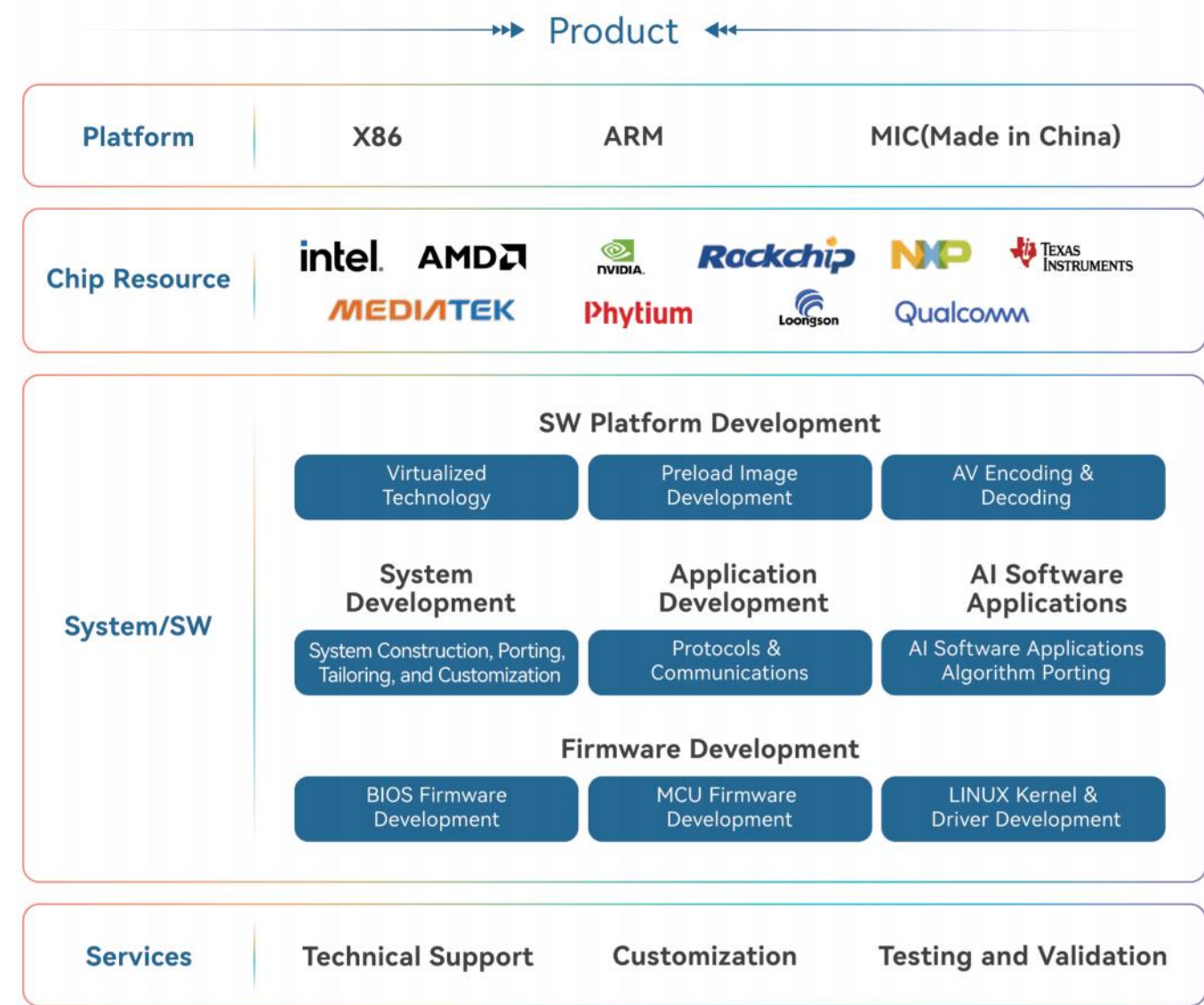
OS Transplantation, Tailoring
and Customization
Software Development
Arithmetic Transplant
HW & SW Integration



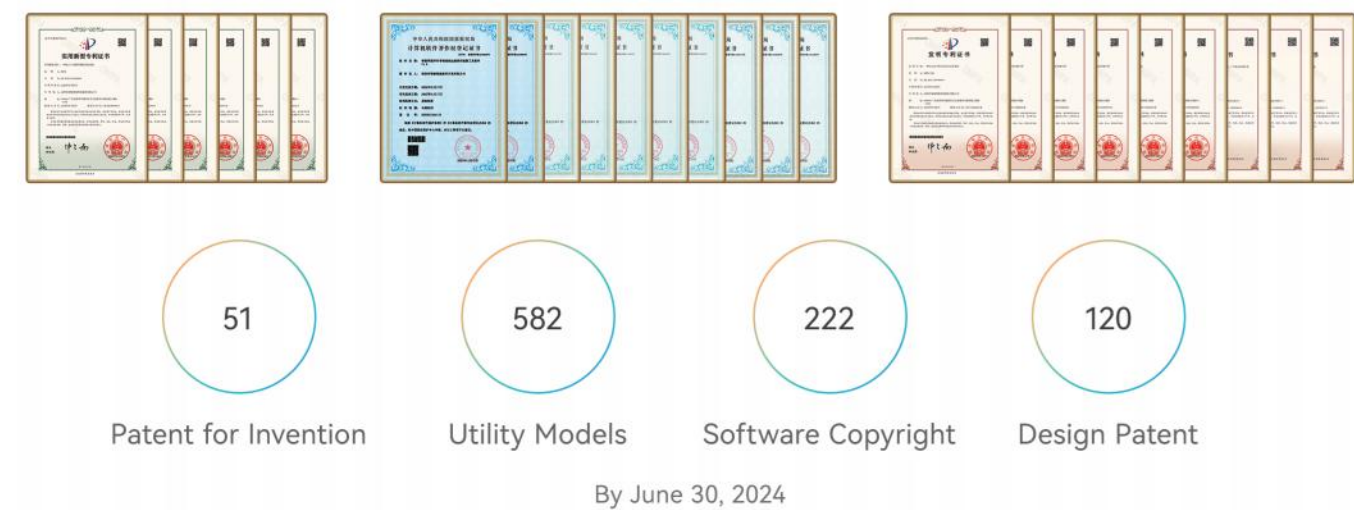
Certificate

CE
CCC
FCC
RoHS

R&D Capabilities



R&D Results



Manufacturing



Complete Certification

ISO9001、ISO14001、ISO45001、ISO27001、QC080000、IATF16949



PRODUCT SUMMARY

EDUCATION IFPD



OPS

- Intel Core-U/P/H
- 80Pin
- 119*180*30mm



OPS 2.0

- Intel Core-S
- 120Pin
- 220/195*180*30mm



OPS-C

- Intel Core-S
- 80Pin
- 195*180*30/42mm



AI OPS

- Intel Core-U+NPU
- 80Pin
- 119*180*30mm

DIGITAL SIGNAGE



Entry Level H Series

- Intel Atom/ARM
- Ultra-low Power
- Fanless



High Performance L Series

- Intel Core-S
- 8K@60Hz
- Watchdog



Mainstream K Series

- Intel Core-U/AMD
- 4*HDMI 4K@60Hz
- Fanless

CONFERENCE



Meeting Host

- Intel Core-U
- 2*HDMI Out/2*HDMI In
- Rooms/Teams



OPS

- Intel Core-U/P/H
- 80Pin
- 119*180*30mm



Wireless Screen Sharing

- Transmitter: T2
- Receiver: R2



Meeting Bar

- Intel Core-U/P/H
- 4K Camera+6 array microphone
- Wireless Screen Sharing+Controller

JWIPC Digital Signage Product Summary

With more than a decade of experience, JWIPC's products, specially designed for the digital signage market, deliver reliability and performance trusted by millions.

ENTRY

H SERIES

Rockchip Arm



2/3 HDMI 4K@60Hz
Fanless
149(L) x 128(W) x 26(H) mm

H SERIES

Intel Atom



2/3 HDMI 4K@60Hz
Fanless
149/199(L) x 128(W) x 26(H) mm

MAINSTREAM

K SERIES

Intel Core-U/P/H



4*HDMI 4K@60Hz
190(L) x 148(W) x 30(H) mm

K SERIES

AMD Ryzen



4*HDMI 4K@60Hz
190(L) x 148(W) x 26(H) mm

PERFORMANCE

L SERIES

Intel Core-S



2*HDMI 4K@60Hz
1*DP 8K@60Hz
190(L) x 186(W) x 40(H) mm

intel

AMD

Rockchip



Watchdog



Auto Power On



7/24 Operation

APPLICATIONS

Brands and Retail

Streaming videos and static ads
Face detection and face recognition triggers
Prompt replacement of content



Bank and Financial Institutions

News ticker with the latest information
RSS feed: weather, exchange rates
Autonomous work capabilities



Shopping Centers and Cinemas

Audio file playback
Playlist creation
Advertising elements and TV broadcasting



Public Transportation

News ticker with the latest information
Video and static ad streaming
Promotion and special offer broadcasting



Gas Station and Car Service

Video and static ad streaming
Promotion and special offer broadcasting
News ticker with the latest information



Restaurants and Cafes

Customer service assessment
Convenient interface for project creation
Promotion and special offer broadcasting



Medical Centers

Customer service assessment
Interactive product catalog
Convenient tool for project creation



Education and Office

Classroom teaching
Video conference
News ticker with the latest information



Entry-level **M**edia **P**layer

H Series

Ultra-low Power Consumption

Fanless Design

Triple 4K Displays

Watchdog

Power On

7 x 24 Operation

Rockchip Series

8 Core + 6 Tops
Fanless Design



The H Series Android media players are an ultra-compact line driven by Rockchip processors, fully compatible with Android 14. The series leverages both the established RK3568 platform and the cutting-edge RK3576 platform, catering to diverse performance requirements. These players boast an impressively low minimum TDP of 5W, which contributes to significant operational cost savings over extended use. With 2 4K UHD display and 1 HDMI IN, the H Series is versatile for a range of digital signage applications, perfect for information display and advertising purposes.

Feature



2 4K Displays



Fanless Design



Watchdog



7 x 24 Unattended Operation



POE PD-IN



HDMI-CEC

Atom Series

Fanless Design

Low Power Consumption



Based on the INTEL ATOM platform, H100 features low power consumption and energy efficiency, it is the optimal choice for entry-level digital signage applications. The Intel Alder Lake-N Processor boasts a minimum power consumption of just 6W. With three HDMI interfaces, supporting 4K display, it is capable of multi-screen information dissemination as well as video playback. The Infineon TPM2.0 encryption feature enhances the security of the product during use. EDID Emulation ensures that the layout of the tiled display is unaffected even after an HDMI disconnection. The abundance of interfaces facilitates the easy expansion of peripherals.

Feature

 4K Display

 TPM2.0

 Watchdog

 7 x 24 Unattended Operation





H076

RK3576 · High performance · 2 Displays

Based on Rockchip RK3576 processor, this media player provides powerful proformance. With Dual 4K displays and rich I/O interfaces, it can meet the needs of digital signage and large screen.

Feature

- 8 Core
- 2 x HDMI OUT ; 1 x HDMI IN
- NPU 6T TOPS
- 4K UHD
- LPDDR4x memory 4GB
- Fanless
- Watchdog

JWIPC Arm Platform Media Player – Rockchip Series



H068

CPU	Rockchip RK3588 4 Cores Cortex-A55
GPU	Mali-G52
NPU	1T LOPS
Memory	LPDDR4x memory 4GB
Storage	EMMC5.1 32GB / 64GB
Ethernet Port	1 x LAN IC YT8521SC
WiFi_BT	1 x AW-XB547NF WiFi-6/BT 5.2
4G	1 x M.2 3042/3052 for 4G/ 5G Module
COM	1 x RS232
Front I/O	1 x Power Button with Green Led 1 x Recovery button 1 x Type-C, 1 x USB3.0 Type-A, 1 x USB2.0 Type-A 1 x Micro SD 1 x Audio out
Rear I/O	1 x DC-In 1 x RJ45 with POE PD-Input 1 x HDMI-out (4K @60Hz) 1 x HDMI-In (1920 * 1080 @60Hz) 1 x Mini DP (Max. 2560*1440 @60Hz) 1 x RS232 COM
Temperature	Operating Temp.-5~45°C , Storage Temp.-20~70°C
MCU Features	Power on/off scheduler, WDT, Auto Power on
Relative Humidity	Operating Humidity 10%~90% non-condensing
OS.	Android 11
DC-In	12v-3A Adaptor with US/EU/UK Plugs
Dimension	151(L) x 129(W) x 30(H) mm



H076

CPU	Rockchip RK3576 4 core Cortex-A73 and 4 core Cortex-A53
GPU	Mali-G52 MC3 GPU
NPU	6T LOPS
Memory	LPDDR4x memory 4GB
Storage	EMMC5.1 32GB / 64GB / 128GB
Ethernet Port	1 x LAN IC RTL8211F-CG
WiFi_BT	1 x AW-XB547NF WiFi-6/BT 5.2
4G	1 x M.2 3042/3052 for 4G/ 5G Module
COM	1 x RS232
Front I/O	1 x Power Button with blue Led 1 x Recovery button 1 x Micro SD/1 x SIM slot 1 x Type-C, 1 x USB3.0 Type-A, 1 x Audio out, 1 x IR
Rear I/O	1 x DC-In 1 x RJ45 with POE PD-Input 2 x USB Type A 1 x HDMI-out (4K @60Hz) 1 x HDMI-In (1920 * 1080 @60Hz) 1 x HDMI-out (Max. 4K @60Hz)
Temperature	Operating Temp.-5~45°C , Storage Temp.-20~70°C
MCU Features	Power on/off scheduler, WDT, Auto Power on
Relative Humidity	Operating Humidity 10%~90% non-condensing
OS.	Android 14
DC-In	12v-3A Adaptor with US/EU/UK Plugs
Dimension	151(L) x 129(W) x 26(H)mm



H105

Intel 12th generation ATOM platform
Excellent graphics processing capabilities
4K Display

Equipped with Intel Alder Lake-N processors N100/N95 and Intel UHD graphics, this media player delivers exceptional processing power and graphical performance, making it ideal for tasks requiring high-performance computing and image processing. It offers a variety of I/O interfaces, supporting multiple peripheral connections.

Feature

- Intel Alder Lake -N Processor
- 3 x HDMI OUT
- 4K UHD
- 3 Displays
- Infineon TPM2.0 chip

JWIPC Intel Platform Media Player – Atom Series



H085

CPU	Intel Elkhart Lake J6412 / N6412
GPU	Intel® UHD Graphics
Memory	Dual Channels LPDDR4x 8 GB, Max. 3200MHz
Storage	1 x M.2 KeyM 2280 SATA/NVME SSD
Audio IC	Realtek ALC897
Ethernet Port	1 x RJ45 Port
WiFi_BT	CB231 or CB515NF WiFi /BT 4.2
4G /5G	1 x M.2 KeyB 3042/3052 Connector for 4G/5G Module
COM	1 x RS232 COM Port
Front I/O	1 x Power Button with Green Led 1 x HDD Led 2 x USB3.2 Gen 1 1 x 3.5mm Line out, 1 x 3.5mm MIC-In
Rear I/O	1 x RJ45 1 x USB 3.2 Gen1, 5 x USB2.0 Type-A 1 x HDMI out (4K @60Hz) 1 x DP out (4K @60Hz) 1 x DC-In,
vPro	No support
Security	Infineon TPM2.0 chip
Temperature	Operating Temp. -5~45℃ , Storage Temp. -20~70℃
Relative Humidity	Operating Humidity 10%~90% non-condensing
OS.	Windows11/ Linux
DC-In	12v-3A Adapter with US/UK/EU Plugs
Dimension	149(L) x 128(W) x 30(H) mm



H105

CPU	Intel Alder Lake-N Processor N100/N95
GPU	Intel® UHD Graphics
Memory	Single Channel SoDIMM DDR4
Storage	1 x M.2 KeyM 2280 SATA/NVME SSD
Audio IC	Realtek ALC897
Ethernet Port	2 x RJ45 Ports
WiFi_BT	CB231 or CB515NF WiFi /BT 4.2
4G /5G	1 x M.2 KeyB 3042/3052 Connector for 4G/5G Module
COM	3 x RS232 COM1-3 Ports, COM4(RS232/RS422/RS485)
Front I/O	1 x Power Button 1 x Power Led, 1 x HDD Led 2 x RS232 COM 2xUSB3.2 Gen 1, 1 x Type-C (USB Data) , 1 x USB2.0 Type-A 1 x 3.5mm Line out, 1x3.5mm MIC-In
Rear I/O	2 x RJ45 2 x USB 3.2 Gen1, 1 x USB2.0 Type-A 3 x HDMI out (4K @30Hz) 1 x DC-In,
vPro	No support
Security	Infineon TPM2.0 chip
Temperature	Operating Temp. -5~45℃ , Storage Temp. -20~70℃
Relative Humidity	Operating Humidity 10%~90% non-condensing
OS.	Windows11/ Linux
DC-In	12v-5A
Dimension	199(L) x 148(W) x 30(H) mm



H125

CPU	Intel Twin Lake -N Processor
GPU	Intel® UHD Graphics
Memory	Single Channel SoDIMM DDR4
Storage	1 x M.2 KeyM 2280 SATA/NVME SSD
Audio IC	Realtek ALC897
Ethernet Port	2 x RJ45 Ports
WiFi_BT	CB231 or CB515NF WiFi /BT 4.2
4G /5G	1 x M.2 KeyB 3042/3052 Connector for 4G/5G Module
COM	3 x RS232 COM1-3 Ports, COM4(RS232/RS422/RS485)
Front I/O	1 x Power Button 1 x Power Led, 1 x HDD Led 2 x RS232 COM 2xUSB3.2 Gen 1, 1 x Type-C (USB Data) , 1 x USB2.0 Type-A 1 x 3.5mm Line out, 1x3.5mm MIC-In
Rear I/O	2 x RJ45 2 x USB 3.2 Gen1, 1 x USB2.0 Type-A 3 x HDMI out (4K @30Hz) 1 x DC-In,
vPro	No support
Security	Infineon TPM2.0 chip
Temperature	Operating Temp. -5~45℃ , Storage Temp. -20~70℃
Relative Humidity	Operating Humidity 10%~90% non-condensing
OS.	Windows11/ Linux
DC-In	12v-5A
Dimension	199(L) x 148(W) x 30(H) mm

Intel K100 Series

15W Power Consumption

Intel® Iris® Xe Graphics



Powered by the high-performance Intel Core-U series processors, the design of P-core and E-core achieves the optimal balance between power consumption and performance. The integrated new-generation Xe architecture GPU offers optimized graphics performance and AI acceleration capabilities, supporting multi-format encoding and decoding, as well as rapid video conversion.

The K100 series supports four 4K displays, allowing for 1x4 and 2x2 display modes according to different scenarios, enabling seamless dynamic playback for multi-screen different or same content display. This robust media player is designed to empower you in crafting superior display solutions for a variety of settings, including shopping malls, hotels, office buildings, business centers, and corporate environments.

Feature



Quad 4K Displays



Auto Power On



Watchdog



7 x 24 Unattended Operation



HDMI-CEC

AMD K200 Series

AMD Platform

AMD Radeon 660M GPU



Powered by the high-performance AMD platform Ryzen5 processors, these powerhouses are designed to deliver seamless and dynamic content with exceptional processing capabilities. Integrated with the AMD Radeon 660M GPU, they ensure smoother display performance. Equipped with four HDMI display interfaces, they support four 4K@60Hz high-definition displays, enabling the creation of a seamless 2x2 mini video wall, which guarantees the panoramic visual experience of the K series. The integration of SODIMM DDR5 memory allows for faster data or dynamic video transmission. These devices are perfectly suited for creating immersive multi-screen and interactive experiences in environments such as retail, airports, hotels, or corporate settings.

Feature



Quad 4K Displays



SODIMM DDR5



Watchdog



7 x 24 Unattended Operation







K115

Intel 12th core platform
4 HDMI + 4K Displays
High performance

Equipped with Intel Alder Lake-U Processor, K115 ensures high reliability and a long life cycle. It is easy to install and maintain, providing a fast and stable network connection, making it an ideal digital signage solution for public transportation.

Feature

-  4 X HDMI OUT
-  Dual Channels DDR4
-  Infineon TPM2.0 chip
-  Windows11/Linux

JWIPC Intel Platform Media Player – Core-U/P/H Series



K115

CPU	Intel Alder Lake-U Processor I3-1215U/I5-1235U/I7-1255U
GPU	Intel® UHD Graphics - I3-1215U Intel® Iris® Xe Graphics - I5-1235U/I7-1255U
Memory	Dual Channels SoDIMM DDR4
Storage	1 x M.2 KeyM 2280 SATA/NVME SSD
Audio IC	Realtek ALC897
Ethernet Port	2 x RJ45 Ports
WiFi_BT	Intel AX101 WiFi /BT5.2
4G /5G	1 x M.2 KeyB 3042/3052 Connector for 4G/5G Module
COM	2 x RS232 COM Ports
Front I/O	1 x Power Button with Green Led 1 x HDD Led 2 x USB3.2 Gen 1, 1 x Type-C (USB3.2 Gen1) 1 x 3.5mm Line out, 1 x 3.5mm MIC-In 1 x Restart Button
Rear I/O	2 x RJ45 2 x USB 3.2 Gen1 4 x HDMI out (4K @60Hz) 1 x DC-In,
vPro	Support
DASH	No Support
Security	Infineon TPM2.0 chip
Temperature	Operating Temp. -5~45°C , Storage Temp. -20~70°C
Relative Humidity	Operating Humidity 10%~90% non-condensing
OS.	Windows11/ Linux
DC-In	19v~4.74A
Dimension	190(L) x 148(W) x 30(H) mm

K115D5

CPU	Intel Alder Lake-U/P Processor
GPU	Intel UHD Graphics - I3-1215U Intel Iris Xe Graphics -I5-1235U / I5-1240P/ I7-1255U
Memory	Dual Channels SoDIMM DDR5
Storage	1 x M.2 KeyM 2280 SATA/NVME SSD
Audio IC	Realtek ALC897
Ethernet Port	2 x RJ45 Ports
WiFi_BT	Intel AX101 WiFi /BT5.2
4G /5G	1 x M.2 KeyB 3042/3052 Connector for 4G/5G Module
COM	2 x RS232 COM Ports
Front I/O	1 x Power Button with Green Led 1 x HDD Led 2 x USB3.2 Gen 1, 1 x Type-C (USB3.2 Gen1) 1 x 3.5mm Line out, 1 x 3.5mm MIC-In 1 x Restart Button
Rear I/O	2 x RJ45 2 x USB 3.2 Gen1 4 x HDMI out (4K @60Hz) 1 x DC-In,
vPro	Support
DASH	No Support
Security	Infineon TPM2.0 chip
Temperature	Operating Temp. -5~45°C , Storage Temp. -20~70°C
Relative Humidity	Operating Humidity 10%~90% non-condensing
OS.	Windows11/ Linux
DC-In	19v~4.74A
Dimension	190(L) x 148(W) x 30(H) mm

K125

CPU	Intel Raptor Lake -U/P Processor
GPU	Intel UHD Graphics - I3-1315U Intel Iris Xe Graphics - I5-1335U /I7-1355U
Memory	Dual Channels SoDIMM DDR4
Storage	1 x M.2 KeyM 2280 SATA/NVME SSD
Audio IC	Realtek ALC897
Ethernet Port	2 x RJ45 Ports
WiFi_BT	Intel AX101 WiFi /BT5.2
4G /5G	1 x M.2 KeyB 3042/3052 Connector for 4G/5G Module
COM	2 x RS232 COM Ports
Front I/O	1 x Power Button with Green Led 1 x HDD Led 2 x USB3.2 Gen 1, 1 x Type-C (USB3.2 Gen1) 1 x 3.5mm Line out, 1 x 3.5mm MIC-In 1 x Restart Button
Rear I/O	2 x RJ45 2 x USB 3.2 Gen1 4 x HDMI out (4K @60Hz) 1 x DC-In,
vPro	Support
DASH	No Support
Security	Infineon TPM2.0 chip
Temperature	Operating Temp. -5~45°C , Storage Temp. -20~70°C
Relative Humidity	Operating Humidity 10%~90% non-condensing
OS.	Windows11/ Linux
DC-In	19v~4.74A
Dimension	190(L) x 148(W) x 30(H) mm



K205

AMD Platform · 4 Displays · High performance

Equipped with efficient AMD Ryzen(TM) 5 7535U Processors, this mini-computer not only provides powerful performance, but also ensures the silence and energy saving of the system, which is very suitable for professional working environments that need high-performance computing power.

Feature

4 X HDMI OUT
4K Display

Infineon TPM2.0 chip

Dual Channels DDR5

Windows11/Linux

JWIPC AMD Platform Media Player – Ryzen Series



K205

CPU	AMD Ryzen 5 7535U Processor
GPU	AMD Radeon 660M
Memory	Dual Channels SoDIMM DDR5
Storage	1 x M.2 KeyM 2280 SATA/NVME SSD
Audio IC	Realtek ALC897
Ethernet Port	1 x RJ45 Port
WiFi_BT	AW-XB547NF /BT5.2
4G /5G	1 x M.2 KeyB 3042 Connector for 4G Module
COM	1 x RS232 COM Port
Front I/O	1 x Power Button with Blue Led 1 x HDD Led 1x USB3.2 Gen2, 1 x USB2.0 Type-A 1 x Type-C (USB3.2 Gen1) 1 x 3.5mm Line out, 1 x 3.5mm MIC-In 1 x Restart Button
Rear I/O	1 x RJ45 1 x RS232 COM 2 x USB 2.0 Type-A 4 x HDMI out (4K @60Hz) 1 x DC-In,
DASH	No support
Security	Infineon TPM2.0 chip
Temperature	Operating Temp. -5~45°C , Storage Temp. -20~70°C
Relative Humidity	Operating Humidity 10%~90% non-condensing
OS.	Windows11/ Linux
DC-In	19V-3.42A
Dimension	190(L) x 148(W) x 26(H) mm

K215

CPU	AMD Ryzen™ 5 8640U Processor
GPU	AMD Radeon™ 760M
Memory	Dual Channels SoDIMM DDR5
Storage	1 x M.2 KeyM 2280 SATA/NVME SSD
Audio IC	Realtek ALC897
Ethernet Port	1 x RJ45 Port
WiFi_BT	AW-XB547NF /BT5.2
4G /5G	1 x M.2 KeyB 3042 Connector for 4G Module
COM	1 x RS232 COM Port
Front I/O	1 x Power Button with Blue Led 1 x HDD Led 1x USB3.2 Gen2, 1 x USB2.0 Type-A 1 x Type-C (USB3.2 Gen1) 1 x 3.5mm Line out, 1 x 3.5mm MIC-In 1 x Restart Button
Rear I/O	1 x RJ45 1 x RS232 COM 2 x USB 2.0 Type-A 4 x HDMI out (4K @60Hz) 1 x DC-In,
vPro	No support
Security	Infineon TPM2.0 chip
Temperature	Operating Temp. -5~45°C , Storage Temp. -20~70°C
Relative Humidity	Operating Humidity 10%~90% non-condensing
OS.	Windows11/ Linux
DC-In	19V-3.42A
Dimension	190(L) x 148(W) x 26(H) mm

High-Performance Media Player

L Series

Ultra-high Performance

8K Display

Watchdog

Power On

vPro & TPM2.0

7 x 24 Operation

Realtek DASH

L Series

The high-performance series, based on the Intel Core S series processors, is crafted with a premium brushed front panel and equipped with high-thermal-conductive aluminum alloy materials, tailored for top-tier models. It features ultra-fast response times and computational speeds, along with robust multi-tasking capabilities. The integrated Intel® UHD Graphics 730/Intel® UHD Graphics 770 GPU (for Core i5/i7) provides a significant boost in graphics processing capabilities. Capable of supporting 8K and dual 4K displays, it is the ideal choice for ultra-high-definition large-format displays that require 24/7 operation.



The L series is exceptionally suitable for scenarios that demand ultimate display quality, such as retail advertising in environments where foot traffic and business opportunities are paramount.





L106

Intel 12th core platform
3 Displays
High performance

Equipped with efficient Intel Core S series processors, this mini-computer not only provides powerful performance, but also ensures the silence and energy saving of the system, which is very suitable for professional working environments that need high-performance computing power.

Feature

- 

2 X HDMI OUT ; 1 x DP OUT
- 

Dual Channels SoDimm DDR4
- 

Infineon TPM2.0 chip
- 

Intel® UHD Graphics

JWIPC Intel Platform Media Player – Core-S Series



L106

CPU	Intel Alder Lake-S Processor I3-12100/I5-12400/I7-12700
GPU	I7 Intel® UHD Graphics 770 I3/I5 Intel® UHD Graphics 730
Chipset	H610 /B760 /Q670
Memory	Dual Channels SoDIMM DDR4
Storage	1 x M.2 KeyM 2280 NVME SSD 1 x M.2 KeyM 2280 SATA/NVME SSD
Audio IC	Realtek ALC897
Ethernet Port	2 x RJ45 Ports(10M/100M/1000M)
WiFi_BT	Intel AX101 WiFi /BT5.2
4G /5G	1 x M.2 KeyB 3042/3052 Connector for 4G/5G Module
COM	2 x RS232 COM Ports
Front I/O	1 x Power Button with blue Led 1 x HDD Led 2 x USB3.2 Gen 2, 1 x Type-C (USB3.2 Gen2) 1 x 3.5mm Line out, 1 x 3.5mm MIC-In 1 x Restart Button
Rear I/O	2 x RJ45 2 x USB 2 x HDMI out (4K @60Hz) 1 x DP out (8K @60Hz) 2 x RS232 COM, 1 x DC-In, 1 x 2PIN Power button Header
vPro/DASH	Support
Security	Infineon TPM2.0 chip
Temperature	Operating Temp. -10~45℃ , Storage Temp. -20~70℃
Relative Humidity	Operating Humidity 10%~90% non-condensing
OS.	Windows11/ Linux
DC-In	19v-6.32A
Dimension	190(L) x 186(W) x 40(H) mm



L116

CPU	Intel Raptor Lake-S Processor I3-13100/ I5-13400/ I7-13700
GPU	I7 Intel® UHD Graphics 770 I3/I5 Intel® UHD Graphics 730
Chipset	H610 /B760 /Q670
Memory	Dual Channels SoDIMM DDR4
Storage	1 x M.2 KeyM 2280 NVME SSD 1 x M.2 KeyM 2280 SATA/NVME SSD
Audio IC	Realtek ALC897
Ethernet Port	2 x RJ45 Ports(10M/100M/1000M)
WiFi_BT	Intel AX101 WiFi /BT5.2
4G /5G	1 x M.2 KeyB 3042/3052 Connector for 4G/5G Module
COM	2 x RS232 COM Ports
Front I/O	1 x Power Button with blue Led 1 x HDD Led 2 x USB3.2 Gen 2, 1 x Type-C (USB3.2 Gen2) 1 x 3.5mm Line out, 1 x 3.5mm MIC-In 1 x Restart Button
Rear I/O	2 x RJ45 2 x USB 2 x HDMI out (4K @60Hz) 1 x DP out (8K @60Hz) 2 x RS232 COM, 1 x DC-In, 1 x 2PIN Power button Header
vPro/DASH	Support
Security	Infineon TPM2.0 chip
Temperature	Operating Temp. -10~45℃ , Storage Temp. -20~70℃
Relative Humidity	Operating Humidity 10%~90% non-condensing
OS.	Windows11/ Linux
DC-In	19v-6.32A
Dimension	190(L) x 186(W) x 40(H) mm



L126

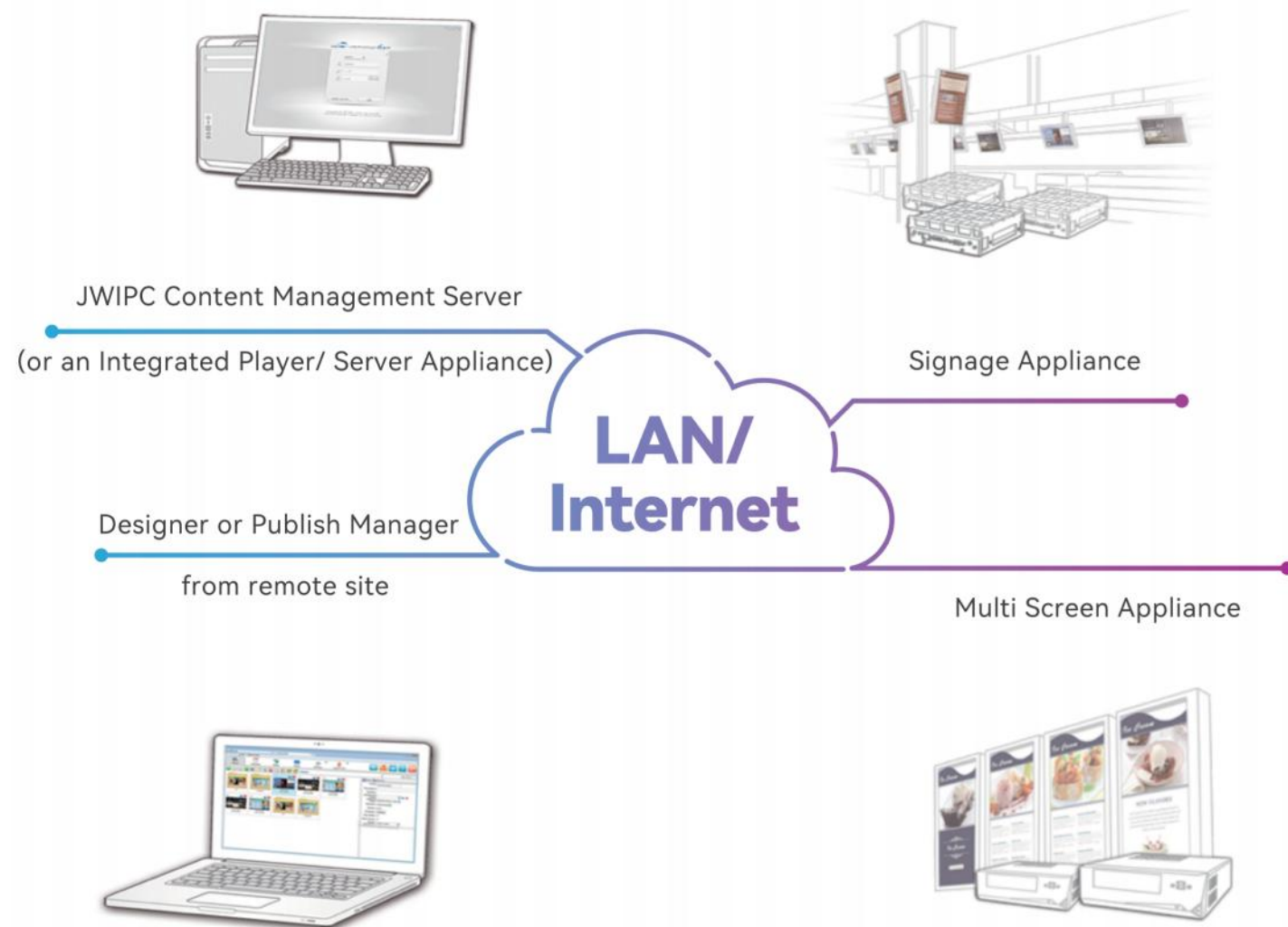
CPU	Intel Raptor Lake Refresh -S Processor I3-14100/ I5-14400 / I7-14700
GPU	I7 IntelR UHD Graphics 770 I3/I5 IntelR UHD Graphics 730
Chipset	H610 /B760 /Q670
Memory	Dual Channels SoDIMM DDR4
Storage	1 x M.2 KeyM 2280 NVME SSD 1 x M.2 KeyM 2280 SATA/NVME SSD
Audio IC	Realtek ALC897
Ethernet Port	2 x RJ45 Ports(10M/100M/1000M)
WiFi_BT	Intel AX101 WiFi /BT5.2
4G /5G	1 x M.2 KeyB 3042/3052 Connector for 4G/5G Module
COM	2 x RS232 COM Ports
Front I/O	1 x Power Button with blue Led 1 x HDD Led 2 x USB3.2 Gen 2, 1 x Type-C (USB3.2 Gen2) 1 x 3.5mm Line out, 1 x 3.5mm MIC-In 1 x Restart Button
Rear I/O	2 x RJ45 2 x USB 2 x HDMI out (4K @60Hz) 1 x DP out (8K @60Hz) 2 x RS232 COM, 1 x DC-In, 1 x 2PIN Power button Header
vPro/DASH	Support
Security	Infineon TPM2.0 chip
Temperature	Operating Temp. -10~45℃ , Storage Temp. -20~70℃
Relative Humidity	Operating Humidity 10%~90% non-condensing
OS.	Windows11/ Linux
DC-In	19v-6.32A
Dimension	190(L) x 186(W) x 40(H) mm

JIPS

JWIPC **I**NFORMATION
PUBLISHING **S**YSTEM

INFORMATION PUBLISHING SYSTEM

System Architecture



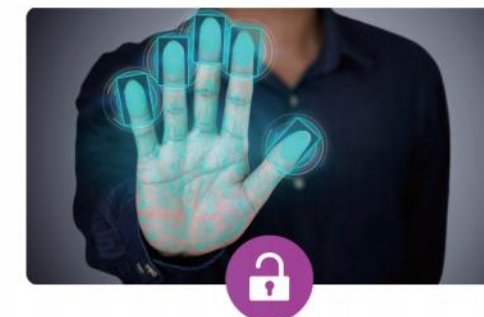
Web-browser Management of Devices/Content

- Complete remote management and update functionalities – Minimize onsite maintenance
- Take control from any location
- Minimal training needed, begin managing content within a few hours



Visitors Insight Analysis

- AI detects offline visitors in real-time
- data analysis reports provided

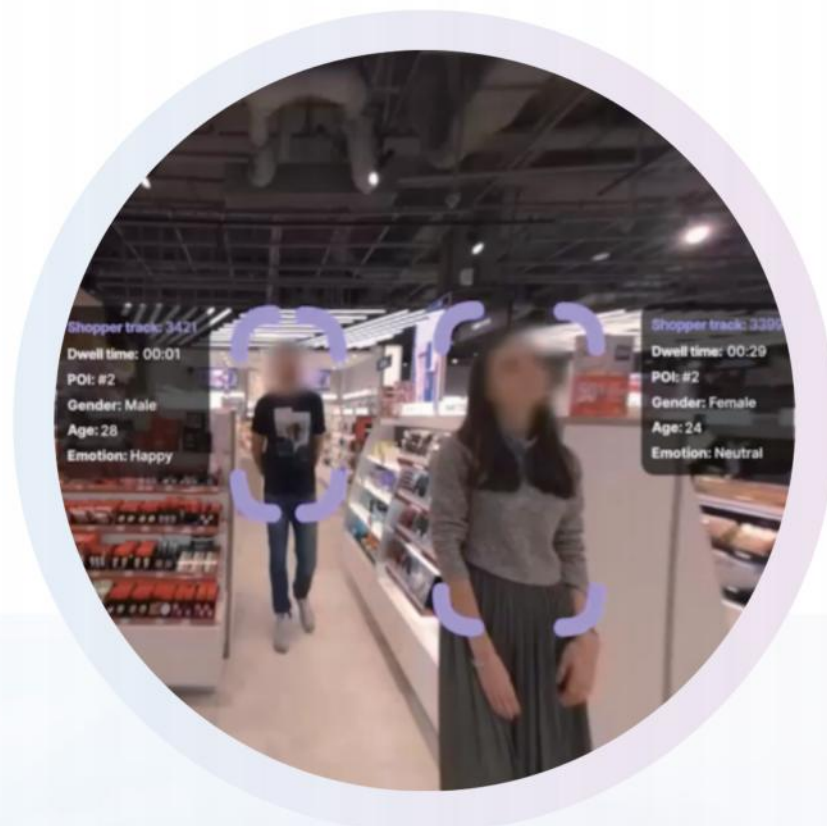


Versatile File Format Support

- Support for a wide variety of media formats, HTML5 widgets, real-time video, streaming video, PowerPoint and remotely executable (.exe) files

INFORMATION PUBLISHING SYSTEM

Visitors Insights:
AI detects offline visitors in real-time



Customer journey id

Dwell time

Age

Gender

Emotion

Smile

Headwear

Glasses

Facial hair

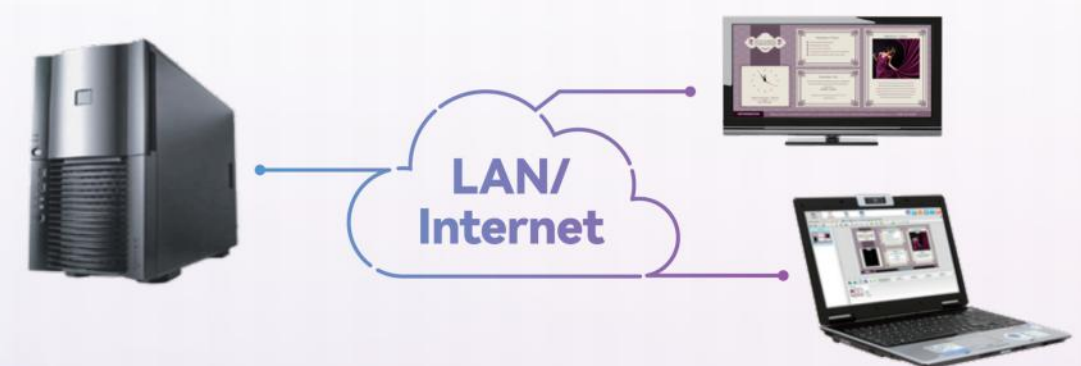
Face mask

Streamline Operation



- 3 steps to publish attractive messages
- Intuitive, graphical and east-to-use interface with thumbnail displays
- Drag-and-drop operation brings efficient workflow
- One click to publish Urgent Cast to the entire signage network; efficient urgent message preloading/ editing

Remote Management



- Web-based browser interface, manage from anywhere anytime
- Remote monitor the media uploading process, playlist publish status
- Snap-shot image of the player's current scheduled event in progress
- Schedule power management – shut down, reboot and wake up for each signage appliance