

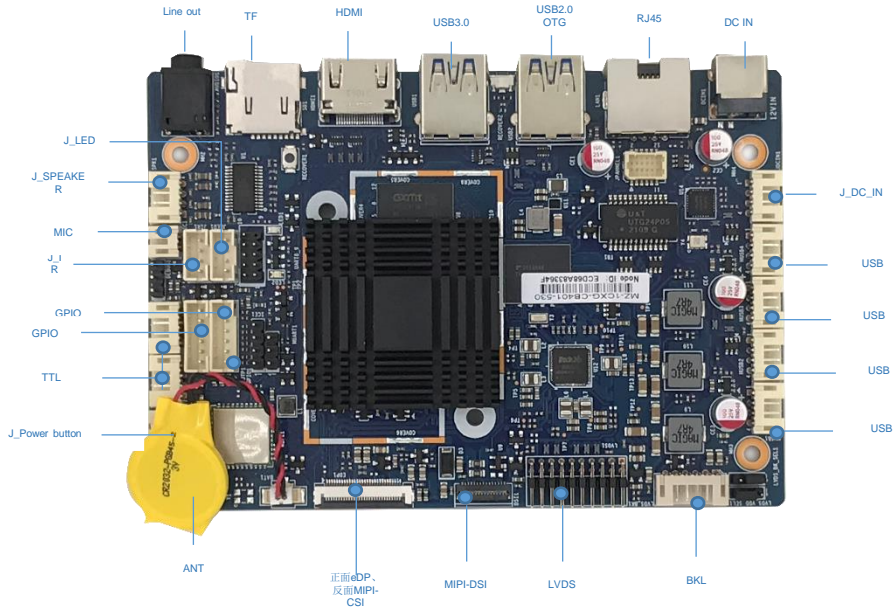


- RK3568, Quad-core Cortex-A55 up to 2.0GHz
- Onboard LPDDR4/4X Memory
- Onboard eMMC Storage
- Onboard WIFI+BT
- Support HDMI/LVDS/eDP/MIPI
- 7 x USB, 4 x COM
- Support 10/100/1000M LAN
- Support WOL, Watchdog, Timer Switch;
- Support Android 11

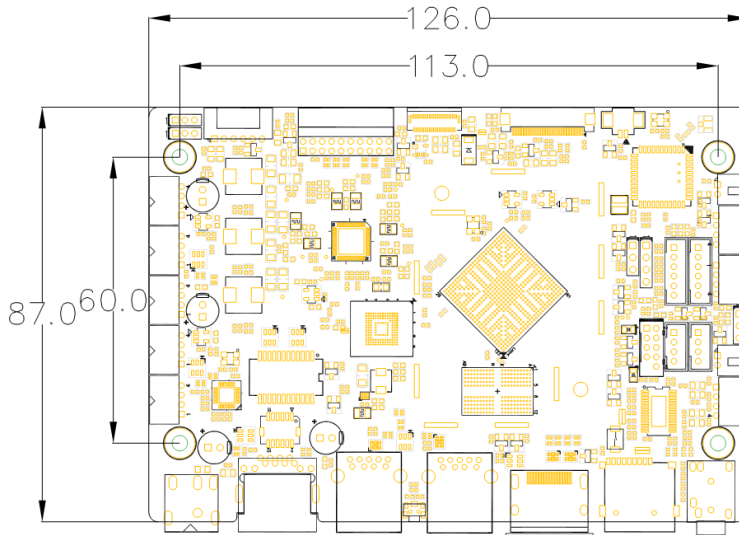
### 主板规格简介

|                    |                    |   |
|--------------------|--------------------|---|
| <b>Processor</b>   | <b>CPU</b>         | RK3568 Quad-core Cortex-A55 up to 2.0GHz  |
| <b>Display</b>     | <b>GPU</b>         | ARM Mali-G52  |
|                    | <b>Interface</b>   | 1 x HDMI Type-A<br>1 x 20 Pin LVDS, 2x 10PIN 2.0mm<br>1 x 6Pin LVDS<br>1 x 30 Pin 0.5mm FPC eDP<br>1 x 31 Pin 0.3mm FPC MIPI-DSI  |
| <b>Memory</b>      | <b>Type</b>        | Option 1 / 2 /4 /6 /8 GB, LPDDR4 /4X  |
| <b>System</b>      | <b>OS</b>          | Android 11、Debian 10  |
| <b>Storage</b>     | <b>Type</b>        | Onboard eMMC (Option 8G/16/32GB/64GB)   |
| <b>Audio</b>       | <b>PMU</b>         | RK809-5 integrated audio  |
|                    | <b>Interface</b>   | 1 x 3.5mm Audio interface: Line out<br>1 x Line out pin, 1 x Mic pin<br>1 x Speaker pin, Amplifier: 5W/8Ω   |
| <b>Network</b>     | <b>LAN</b>         | 1 x 10/100/1000Mbps Lan   |
| <b>I/O</b>         | <b>USB</b>         | IO: 2 x USB3.0, one OTG, Default is HOST<br>Internal pins : 5 x USB2.0  |
|                    | <b>COM</b>         | 2 个 4pin TTL<br>2 个 RS232/TTL option, 2*5-1pin 2.0mm  |
|                    | <b>Extension</b>   | 1 x TF slot<br>1 x TP-I2C(1*6pin 2.0mm)<br>1 x Power indicator LED pin<br>1 x GPIO pin ,support one ADC and three GPIO<br>1 x IR pin<br>1 x MIPI-CSI, 40pin 0.5mm FPC<br>1 x FPANEL pin, LAN+USB2.0 |
| <b>Power</b>       | <b>Input</b>       | 12V DC input  |
| <b>Size</b>        | <b>L X H</b>       | 126mm x 87mm  |
| <b>Environment</b> | <b>Temperature</b> | <b>Operating</b> :-5~50°C, <b>Storage</b> : -20~70°C  |
|                    | <b>Humidity</b>    | 5%~90% Non-condensing   |

## 产品图示



## 产品尺寸图



## 产品选型

| Type       | Description              |
|------------|--------------------------|
| R68D-128T  | RK3568/WIFI/2G/8G/TTL    |
| R28D-1216T | RK3568/WIFI/2G/16G/TTL   |
| R28D-1216R | RK3568/WIFI/2G/16G/RS232 |
| R28D-1416T | RK3568/WIFI/4G/16G/TTL   |
| R28D-1416R | RK3568/WIFI/4G/16G/RS232 |
| R28D-1432R | RK3568/WIFI/4G/32G/RS232 |

产品说明, 如有变更, 恕不另行通知