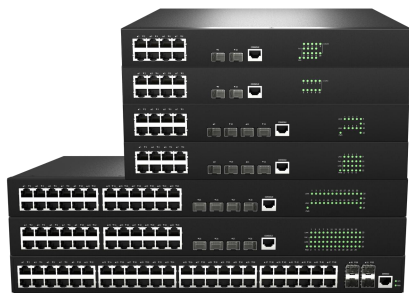


S3200 Series – Gigabit Managed Switch

Access /Aggregation Switch

Introduction

The S3200 Series are full gigabit L2 managed Ethernet switch. The switches are ideal for Internet Service Providers (ISPs) and Multiple System Operators (MSOs) to provide home users with triple-play services with up to Gigabit bandwidth. It is also an ideal Gigabit access switch for SMB, enterprise, and campus networks. The 3200 Series switches are packed with features that bring high availability, comprehensive security, robust multicast control, and advance QoS to the network edge, while maintaining simple management.



Features

- Full gigabit L2 managed Ethernet switch
- IEEE802.3af/at standard supported on selected models
- Support TACACS+, SNMPv3, IEEE 802.1X, HTTPS, and SSHv2
- Support ERPSv1, STP/RSTP and MSTP
- Easy network management by web browser, CLI, Telnet/serial console



Specifications

Items		S3200-10TF	S3200-10TF-P	S3200-12TF	S3200-12TF-P	S3200-28TF	S3200-28TF-P	S3200-52TF
PORT	10/100/1000BaseT(X) Ports	8 ports	8 ports	8 ports	8 ports	24 ports	24 ports	48 ports
	1G SFP	2 ports	2 ports	4 ports	4 ports	4 ports	4 ports	4 ports
	GE out-of-band management ports	N/A	N/A	N/A	N/A	N/A	N/A	N/A
	console RJ45 ports	1	1	1	1	1	1	1
	Power over Ethernet	N/A	IEEE802.3af/at, 60W power budget	N/A	IEEE802.3af/at, 240W power budget	N/A	IEEE802.3af/at, 360W power budget	N/A
Performance	Flash memory	32M Byte	32M Byte	32M Byte	32M Byte	32M Byte	32M Byte	32M Byte
	DDRIII capacity	128M Byte	128M Byte	256M Byte	256M Byte	256M Byte	256M Byte	128M Byte
	MAC address table size	8K	8K	8K	8K	8K	8K	16K
	ARP table size	1K	1K	1K	1K	1K	1K	1K
	Jumbo frames	9KB	9KB	9KB	9KB	9KB	9KB	9KB
	Switching capacity	20Gbps	20Gbps	24Gbps	24Gbps	56Gbps	56Gbps	104Gbps
	Auto-negotiation	Supported	Supported	Supported	Supported	Supported	Supported	Supported
	Auto-MDI/MDIX	Supported	Supported	Supported	Supported	Supported	Supported	Supported
Power supply	Input range	12V/1A	53V/1.5A	12V/1A	54.5V/4.86A 12V/2A	12V/2.1A	12V/5A 54V/7.2A	12V/3A
	System power consumption	12W	80W	12W	288W	24W	450W	36W
LED	Port LED	Green: link/active Yellow: speed	Green: link/active Yellow: speed Yellow: PoE	Green: link/active Yellow: speed	Green: link/active Yellow: speed Yellow: PoE	Green: link/active Yellow: speed	Green: link/active Yellow: speed Yellow: PoE	Green: link/active
		Green: link/active						
Mechanical	Dimension (W x D x H) mm	266*161*43.6	320*208*43.6	320*208*44	320*208*44	442*220*43.6	440*260*43.6	440*220*44
	Operating Temperature	0° to 50°C						
Environment	Storage Temperature	-40° to 70°C						
	Operating Humidity (non-condensing)	10% to 90%						
	Storage Humidity (non-condensing)	10% to 90%						
	FCC Class A	Supported						
Certifications	CE	Supported						
	Safety Compliance: CB	Supported						
	Safety Compliance: UL	Supported						

Software Features

Items		S3200-10TF	S3200-10TF-P	S3200-12TF	S3200-12TF-P	S3200-28TF	S3200-28TF-P	S3200-52TF
L2 Features	VLAN	IEEE 802.1Q VLAN; IEEE 802.1v Protocol-based VLAN; Port-based VLAN; IP Subnet-based VLAN, MAC-based VLAN, Voice VLAN; GVRP; QinQ						
	Link aggregation	Static link aggregation; IEEE 802.3ad with LACP; Unicast/Multicast load balance over trunk port						
	Redundancy Protocols	ERPSv1, STP/RSTP and MSTP						
	ACL	L3/L4 ACL; Statistics ACL; VLAN ACL; IPv4/IPv6 ACL						
	QOS	Traffic Classification (802.1p/ToS/port/DiffServ); SP, WRR, SP+WRR; 8 queues/port of Priority Queues						
	IGMP	IGMP v1v2v3, IGMP Snooping						
	Storm Control	Broadcast/Multicast/ Unknown Unicast Storm Control						
	Security	RADIUS / TACACS+, IEEE 802.1X; Port authentication, MAC Authentication bypass; DHCP Snooping (Option 82), IP Source guard, DoS Protection						
	IPv6	IPv4/IPv6 Dual Protocol Stack, IPv6 DHCP						
Management	CLI via console port or Telnet, Web management, SNMPv3; RMON (groups 1, 2, 3 and 9); MIB II; DHCP client, DHCP Relay; FTP/SFTP/TFTP client; NTP; LLDP; ping; Traceroute; syslog							

Order Information

Model	Description
S3200-10TF	8-port RJ45 + 2-port SFP full gigabit L2 managed Ethernet switch.
S3200-10TF-P	8-port RJ45 + 2-port SFP full gigabit L2 managed Ethernet switch with PoE/PoE+.
S3200-12TF	8-port RJ45 + 4-port SFP full gigabit L2 managed Ethernet switch.
S3200-10TF-P	8-port RJ45 + 4-port SFP full gigabit L2 managed Ethernet switch with PoE/PoE+.
S3200-28TF	24-port RJ45 + 4-port SFP full gigabit L2 managed Ethernet switch.
S3200-28TF-P	24-port RJ45 + 4-port SFP full gigabit L2 managed Ethernet switch with PoE/PoE+.
S3200-52TF	48-port RJ45 + 4-port SFP full gigabit L2 managed Ethernet switch.