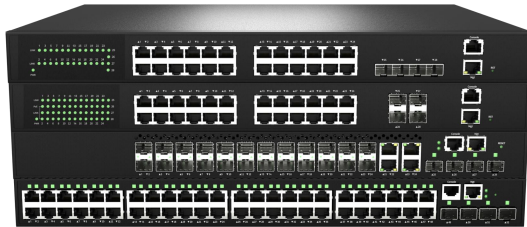


S5600 Series – 10G L3 Lite managed switch

Access /Aggregation Switch

Introduction

The S5600 Series are 10G L3 lite managed switch with SFP+ uplinks. The switches are ideal for Internet Service Providers (ISPs) and Multiple System Operators (MSOs) to provide home users with triple-play services and Gigabit bandwidth. It is also an ideal gigabit access switch for SMB, enterprise, and campus networks. The S5600 Series switches are packed with features that bring high availability, comprehensive security, robust multicast control, and advance QoS to the network edge, as well as static routing and dynamic routing capabilities.



Features

- 10G L3 lite managed switch
- Dynamic routing and static routing
- IEEE802.3af/at standard supported on PoE model
- Support TACACS+, SNMPv3, IEEE 802.1X, HTTPS, and SSHv2
- Support ERPSv1, STP/RSTP and MSTP
- Easy network management by web browser, CLI, Telnet/serial console

Specifications

Items		S5600-28TS	S5600-28FS	S5600-52TS	S5600-28TS-P
PORT	10/100/1000BaseT(X) Ports	24 ports	4 ports (combo)	48 ports	24 ports
	1G SFP	N/A	24 ports	N/A	N/A
	10G SFP+	4 ports	4 ports	4 ports	4 ports
	GE out-of-band management ports	1	1	1	1
	console RJ45 ports	1	1	1	1
	Power over Ethernet	N/A	N/A	N/A	IEEE802.3af/at, 360W power budget
Performance	Flash memory	64M Byte	64M Byte	64M Byte	64M Byte
	DDRIII capacity	2G Byte	2G Byte	2G Byte	2G Byte
	MAC address table size	16K	16K	16K	16K
	ARP table size	1K	1K	1K	1K
	Jumbo frames	9KB	9KB	9KB	9KB
	Switching capacity	128Gbps	128Gbps	176Gbps	128Gbps
	Auto-negotiation	Supported	Supported	Supported	Supported
	Auto-MDI/MDIX	Supported	Supported	Supported	Supported
Power supply	Input range	100-240VAC 50-60Hz	100-240VAC 50-60Hz	100-240VAC 50-60Hz	100-240VAC 50-60Hz
	System power consumption	21W	45W	45W	450W
LED	Port LED	Green: link/active	Green: link/active	Green: link/active	Green: link/active Yellow: PoE
Mechanical	Dimension (W x D x H) mm	440 * 280 * 44	440 * 280 * 44	440 * 330 * 44	440 * 280 * 44
Environment	Operating Temperature	0° to 50°C			
	Storage Temperature	-40° to 70°C			
	Operating Humidity (non-condensing)	10% to 90%			
	Storage Humidity (non-condensing)	10% to 90%			
Certifications	FCC Class A	Supported			
	CE	Supported			
	Safety Compliance: CB	Supported			
	Safety Compliance: UL	Supported			

Software Features

Items		S5600-28TS	S5600-28FS	S5600-52TS	S5600-28TS-P
L2 Features	VLAN	IEEE 802.1Q VLAN; IEEE 802.1v Protocol-based VLAN; Port-based VLAN; IP Subnet-based VLAN, MAC-based VLAN, Voice VLAN; GVRP; QinQ			
	Link aggregation	Static link aggregation; IEEE 802.3ad with LACP; Unicast/Multicast load balance over trunk port			
	Redundancy Protocols	ERPSv1; STP/RSTP and MSTP			
	ACL	L3/L4, Statistics ACL VLAN ACL, Global ACL; IPv4/IPv6/MAC/ARP ACL			
	QOS	Traffic Classification (802.1p/ToS/port/DiffServ); SP, WRR, SP+WRR; 8 queues/port of Priority Queues			
	IGMP	IGMP v1v2v3, IGMP Snooping			
	Storm Control	Broadcast/Multicast/ Unknown Unicast Storm Control			
	Security	RADIUS / TACACS+, IEEE 802.1X; Port authentication, MAC Authentication bypass; DHCP Snooping (Option 82), IP Source guard, DoS Protection; HTTPS and SSLv3			
IPv6	IPv4/IPv6 Dual Protocol Stack; IPv6 Neighbor Discovery; IPv6 Neighbor Discovery Snooping; IPv6 DHCP client, IPv6 DHCP Snooping; MVR over IPv6, SNMP over IPv6, HTTP over IPv6, SSH over IPv6, Telnet over IPv6				
Management	CLI via console port or Telnet, Web management, SNMPv3; RMON (groups 1, 2, 3 and 9); MIB II; DHCP client, DHCP Relay, DHCP dynamic provision option 66,67 FTP/SFTP/TFTP client; SNTP/NTP; NTP; LLDP; OAM; UDLD; SMTP; sFlow; MLDv1/v2; MLD snooping; ping; Traceroute; syslog				
L3 Features	Routing	Static Unicast Routes; RIPv1/v2; OSPF			

Order Information

Model	Description
S5600-28TS	24-port RJ45 + 4-port SFP+ 10G L3 lite managed Ethernet switch
S5600-32FS	24-port SFP + 4-port combo +4-port SFP+ 10G L3 lite managed Ethernet switch
S5600-52TS	48-port RJ45 + 4-port SFP+ 10G L3 lite managed Ethernet switch
S5600-28TS-P	24-port RJ45 + 4-port SFP+ 10G L3 lite managed Ethernet switch with PoE+