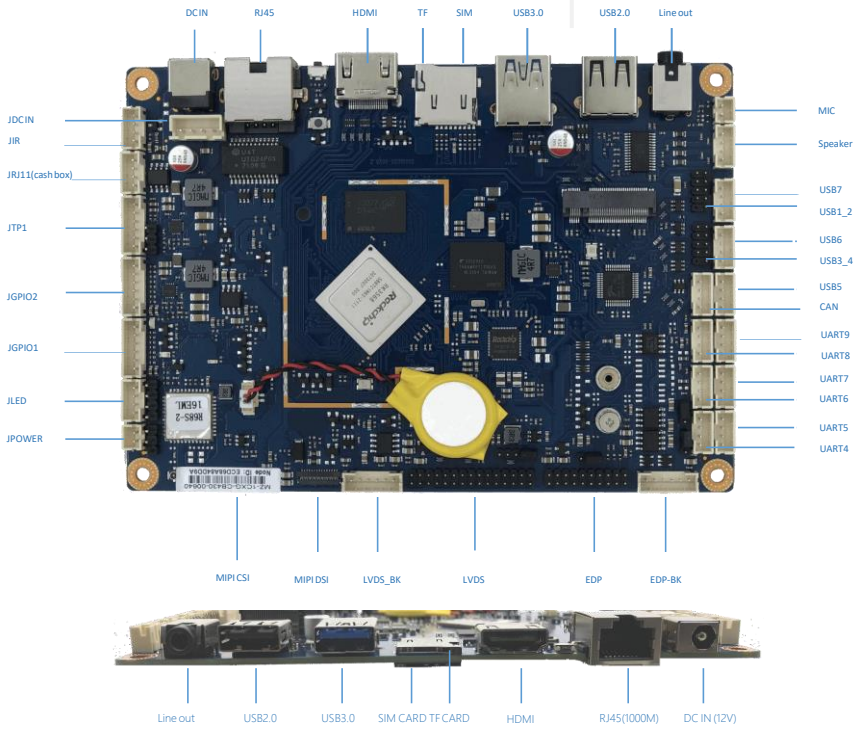


- RK3568 4Core SOC , ARM Cortex-A55, Max. 2.0GHz
- Onboard 2GB LPDDR4/4X (optional 4GB)
- Supports HDMI/LVDS/eDP/MIPI(option)
- Supports MIPI CSI Camera
- Onboard 16GB EMMC (optional 8/16/32GB)
- 2.4G WIFI+BT4.2/2.4&5G WIFI+BT4.2
- 9 USB2.0, 6 COM
- 10/100/1000M Ethernet
- Supports 4G/5G wireless network
- Supports GPIO/I2C/CAN/Cash box/Watchdog
- Supports 12V DC Input

Specification

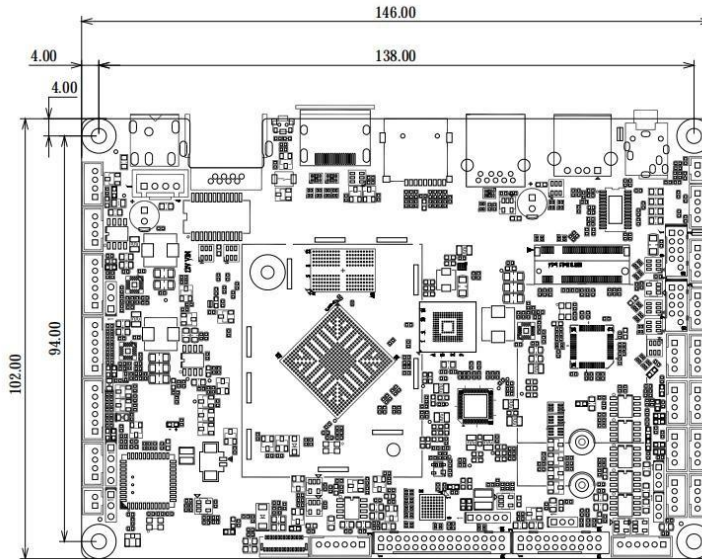
Processor	CPU	RK3568 Quad-core Cortex-A55 up to 2.0GHz
Display	GPU	ARM Mali-G52
	Interface	1 x HDMI Type-A 1 ,30 Pin, 2x 15PIN LVDS Port 1 ,20 Pin, 2x 10PIN eDP Port 1 ,31 Pin, FPC MIPI DSI Port
Memory	Type	2GB/4GB LPDDR4/4X optional
System	OS	Android 11、 Debian 10
Storage	Type	Onboard 8GB EMMC (optional 16/32GB)
Audio	PMU	HD Audio IC, RK809-5
	Interface	1 x 3.5mm Audio jack: Line out with mic ; Amplifier: 5W/4Ω x2 1 x Mic in (1*2pin 2.0mm wafer), 1 x Speaker(1*4pin 2.0mm wafer)
Network	LAN	1 x 10/100/1000Mbps, RTL8111H
	Wireless	Onboard 2.4G WIFI+BT4.2 / 2.4G&5G WIFI+BT4.2
I/O	USB	IO: 1 xUSB2.0, 1 xUSB3.0, Internal : 7 USB2.0
	COM	2 xRS232 Support 5/12V optional (4pin header) 2 xRS232/TTL optional 5V (4pin header) 2 xRS232/RS485/TTL optional 5V (4pin header)
	Extension	1 x M.2 for 4G/5G mobile network module 1 x TF Slot 1 x Micro SIM Slot 1 x TP-I2C(1*6pin 2.0mm wafer) 2 x GPIO header (1*6pin 2.0mm wafer) support 7GPIO, 1 ADC 1 x IR header (1*4pin 2.0mm wafer) 1 x LED header (1*4pin 2.0mm wafer) 1 x CAN header (1*4pin 2.0mm wafer) 1 x Cash Box header (1*4pin 2.0mm wafer) 1 x POWER header (1*2pin 2.0mm wafer) 1 x 12V DC IN header (1*4pin 2.54mm wafer)
Power	Input	12V DC input
Size	L X H	146mm x 102mm
Environment	Working condition	-5~50°C , 10%~90% non-condensing
	Storage condition	-20~70°C ,5%~90% non-condensing

View



Size

IO



Information

P/N	Description
R68S-A1	RK3568/2G/16G/4*RS232/2*RS485/LVDS+EDP+MIPI+HDMI/LAN/2.4G WIFI+BT4.2
R68S-B1	RK3568/2G/16G/6*RS232/EDP+MIPI+HDMI/LAN/2.4G WIFI+BT4.2

Product descriptions are subject to change without notice.