

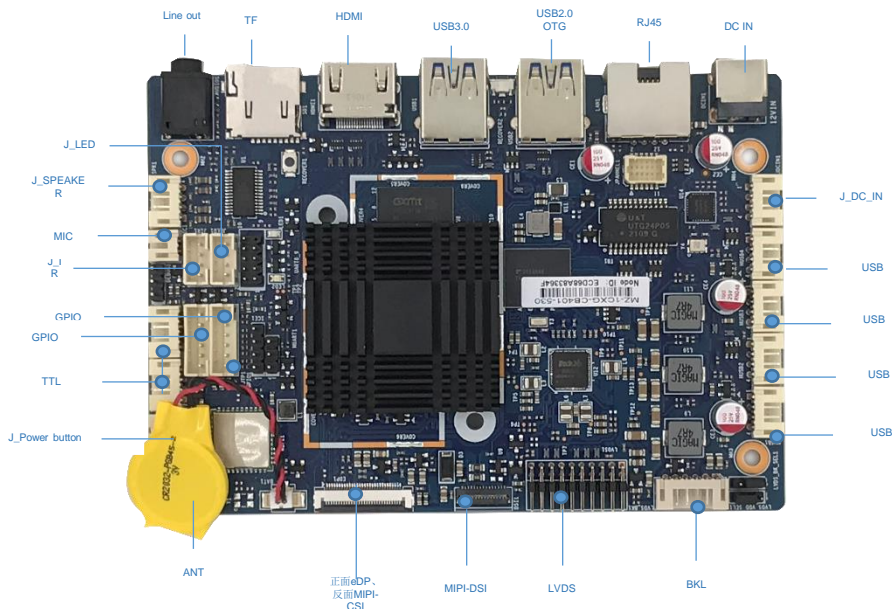


- RK3568, Quad-core Cortex-A55 up to 2.0GHz
- Onboard LPDDR4/4X Memory
- Onboard eMMC Storage
- Onboard WIFI+BT
- Support HDMI/LVDS/eDP/MIPI
- 7 x USB, 4 x COM
- Support 10/100/1000M LAN
- Support WOL, Watchdog, Timer Switch;
- Support Android 11

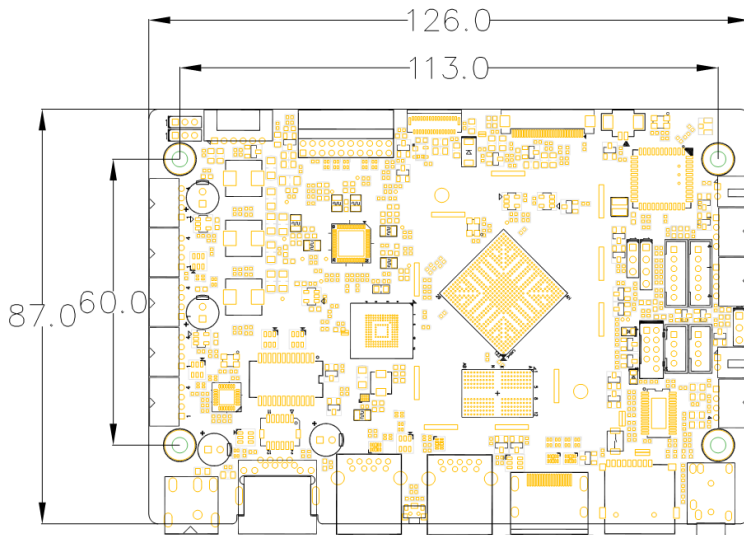
主板规格简介

Processor	CPU	RK3568 Quad-core Cortex-A55 up to 2.0GHz
Display	GPU	ARM Mali-G52
	Interface	1 x HDMI Type-A 1 x 20 Pin LVDS, 2x 10PIN 2.0mm 1 x 6Pin LVDS 1 x 30 Pin 0.5mm FPC eDP 1 x 31 Pin 0.3mm FPC MIPI-DSI
Memory	Type	Option 1 / 2 /4 /6 /8 GB, LPDDR4 /4X
System	OS	Android 11、Debian 10
Storage	Type	Onboard eMMC (Option 8G/16/32GB/64GB)
Audio	PMU	RK809-5 integrated audio
	Interface	1 x 3.5mm Audio interface: Line out 1 x Line out pin, 1 x Mic pin 1 x Speaker pin, Amplifier: 5W/8Ω
Network	LAN	1 x 10/100/1000Mbps Lan
I/O	USB	IO: 2 x USB3.0, one OTG, Default is HOST Internal pins : 5 x USB2.0
	COM	2 个 4pin TTL 2 个 RS232/TTL option, 2*5-1pin 2.0mm
	Extension	1 x TF slot 1 x TP-I2C(1*6pin 2.0mm) 1 x Power indicator LED pin 1 x GPIO pin ,support one ADC and three GPIO 1 x IR pin 1 x MIPI-CSI, 40pin 0.5mm FPC 1 x FPANEL pin, LAN+USB2.0
Power	Input	12V DC input
Size	L X H	126mm x 87mm
Environment	Temperature	Operating :-5~50°C, Storage : -20~70°C
	Humidity	5%~90% Non-condensing

产品图示



产品尺寸图



产品选型

Type	Description
R68D-128T	RK3568/WIFI/2G/8G/TTL
R28D-1216T	RK3568/WIFI/2G/16G/TTL
R28D-1216R	RK3568/WIFI/2G/16G/RS232
R28D-1416T	RK3568/WIFI/4G/16G/TTL
R28D-1416R	RK3568/WIFI/4G/16G/RS232
R28D-1432R	RK3568/WIFI/4G/32G/RS232

产品说明, 如有变更, 恕不另行通知