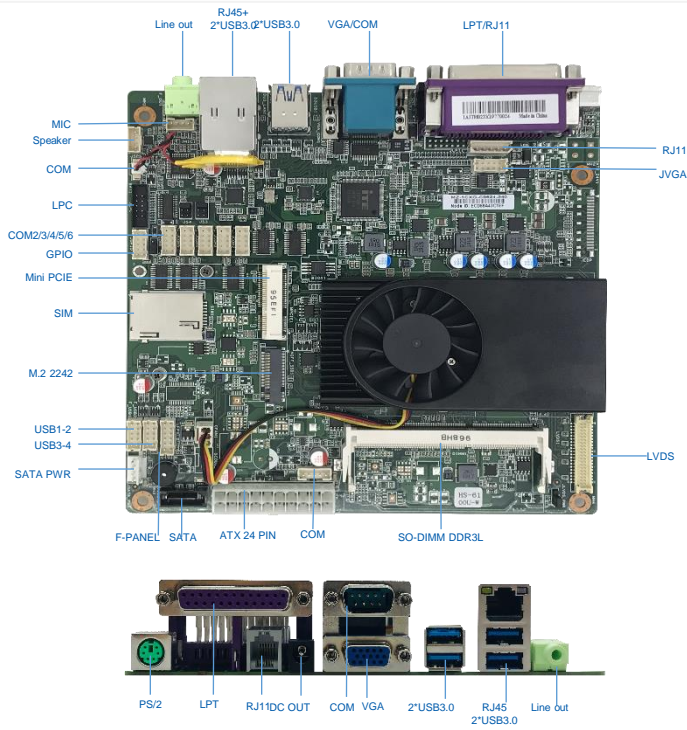


- Intel Kaby lake-U SOC, 4Core,TDP 15W
- 1 SO-DIMM DDR3L Memory, Max 8G
- Supports dual display of VGA/LVDS/EDP
- 1 M.2 2242 , 1 SATA port,
- 1 Mini PCIe for wireless & 3G/4G module
- 8 USB2.0/3.0, 6 COM
- 1 GbE Lan
- Supports GPIO/Watchdog
- Supports 24V DC Input/ATX(24 pin) ---Either-or

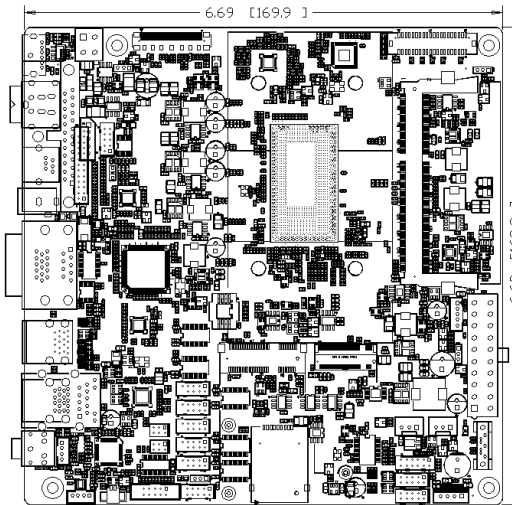
Specification

Processor	CPU	Intel Kaby lake-U SOC, 4Core ,TDP 15W
	PCH	SOC
Display	Graphics	Intel HD Graphics
	Interface	1 x VGA 1 x EDP(44pin) 1 x LVDS (40pin)+5pin EDP Bak
Memory	Type	1 x SO-DIMM DDR3L
System	OS	WINDOW 7/WINDOWS 10/Linux
	BIOS	AMI UEFI BIOS
Storage	SATA	1 x SATA ports
	M.2	1 x M.2
Audio	Chipset	HD Audio IC, ALC662
	Interface	2 x 3.5mm Audio jack: Line out, Mic in Fanel audio: Line out, Mic in Amplifier: 3W/4Ω x2
Network	LAN	1 x 10/100/1000Mbps, RTL8111E
I/O	USB	IO: 1 USB3.0,3 USB2.0 Internal : 4 USB2.0, (2x 9pin USB2.0)
	COM	Fanel IO: 1 DB-9 Rear IO: 5 RS232
	Expansion	1 x Mini PCIe for wireless & 3G/4G module 1 x Fanel, 9pin (Power on, Power led, Reset, Storge led) 1 x JVGA, 1 x SATA Power(HDD_PWR 4pin) 1 x LPC, 1 x DC IN,1 x NANO SIM, 1 x LPC, 1 x DC OUT1, 1 x DC OUT2, 1 x PS/2
	Other	1 x LPT , 1 x RJ11,FAN: 1 x CPU_FAN , 1 x SYS_FAN
Power	Input	24V DC input/ATX (24 pin)
SIZE	L X H	Thin ITX Motherboard spec, 170 x 170 mm
Environment	Working temperature	-5~50°C
	Working Humidity	10%~90% non-condensing
	Storage temperature	-20~70°C
	Non working Humidity	5%~90% non-condensing

View



Size



Information

P/N	Description
SU38M1D1-6	3855U/ 7 USB2.0 /1 USB3.0/ 6 COM/ LAN

Product descriptions are subject to change without notice.